



PREMEDICAL PROGRAM

PM Office is ___ a part of an academic department;
support office in College of A&S

PM Office supplements advising offered within academic
departments & other support offices

"Pre-Med" / "Pre-Health" is NOT an academic major

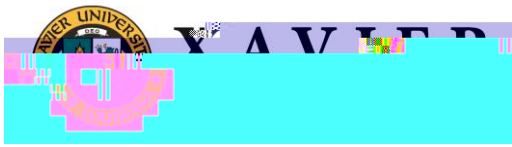
Most XU premeds major in Biology-Premed, Chemistry-
Premed, or Psychology-Premed, but can complete
"premed" courses in ANY major



PREMEDICAL PROGRAM

Academic

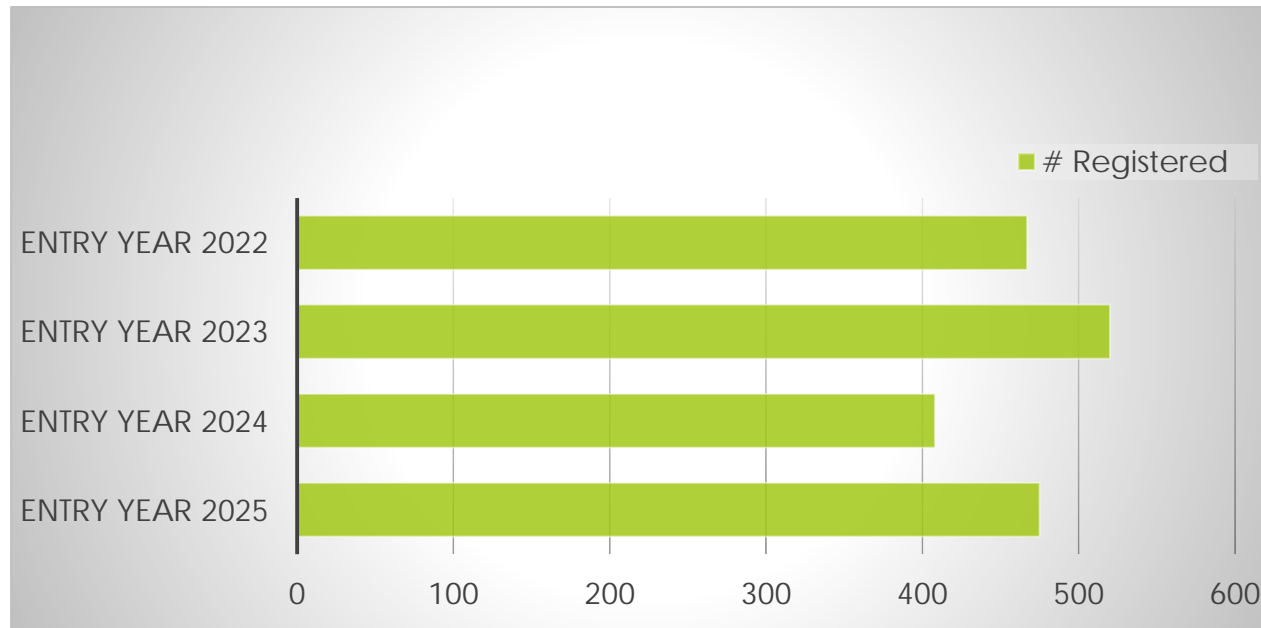
Student Support



PREMEDICAL ADVISING

Students & alumni (any major) self-select to receive premed advising

Advising based on self-reported professional school entry year





PREMEDICAL ADVISING

_____ premeds to cultivate _____ apps for HP schools

_____ premeds with a variety of app prep services throughout enrollment

_____ premeds to develop cognitive & non-cognitive elements of apps so _____



Special Programs for XU Premeds

Biomedical Honor Corps

Alpha Epsilon Delta H0a †



Early Assurance Programs (EAPs)

13 EAPs w/ Health Professions Schools

Opportunity for early cond'l acceptance (not early matriculation)

Program-

Early Assurance Programs (EAPs)

- 1st EAP partner; most frequently applied to program
- Apply end of spring sophomore year
- Min. 3.5 overall GPA
- MCAT (min. composite 70th percentile)





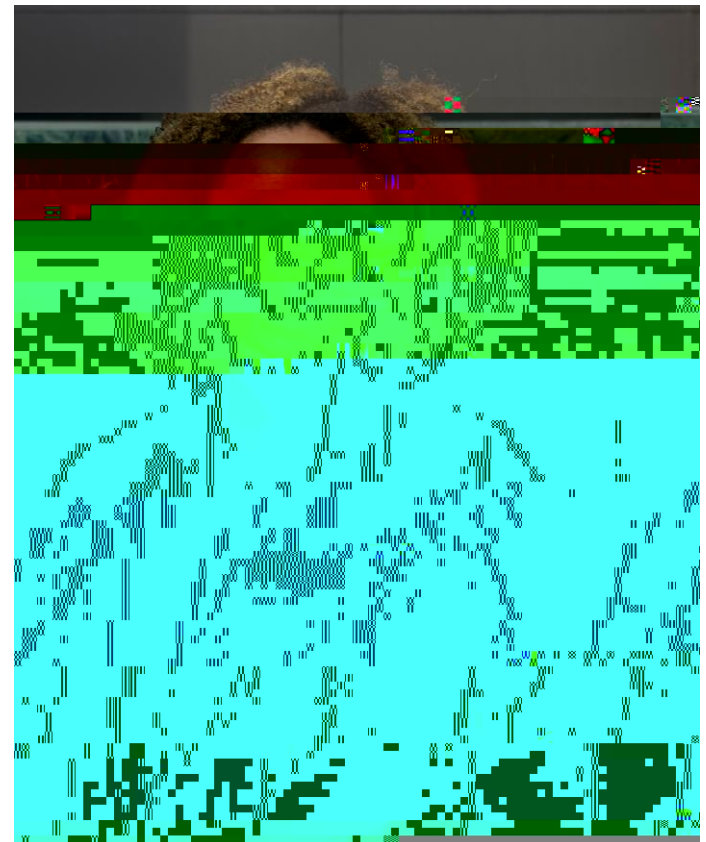
Early Assurance Programs (EAPs)

- 2nd most frequently applied to EAP; 1st in matriculants

0 G -0.0338 Tc[st]]TJET58g0 540 reW*nf 720 540 reW*nBT/F1 15 Tfi3089

Early Assurance Programs (EAPs)

-
-
- Apply end of spring sophomore year
 - Min. 3.5 overall & BCPM GPAs
 - MCAT (min. composite 503)





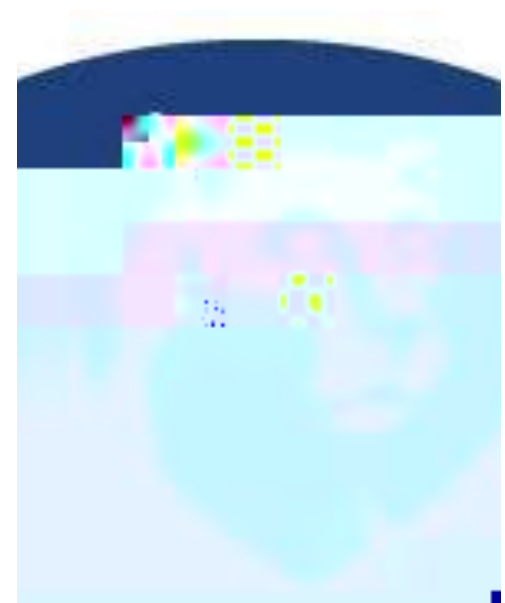
Early Assurance Programs (EAPs)

-
-
- Apply early spring junior/senior year



Early Assurance Programs (EAPs)

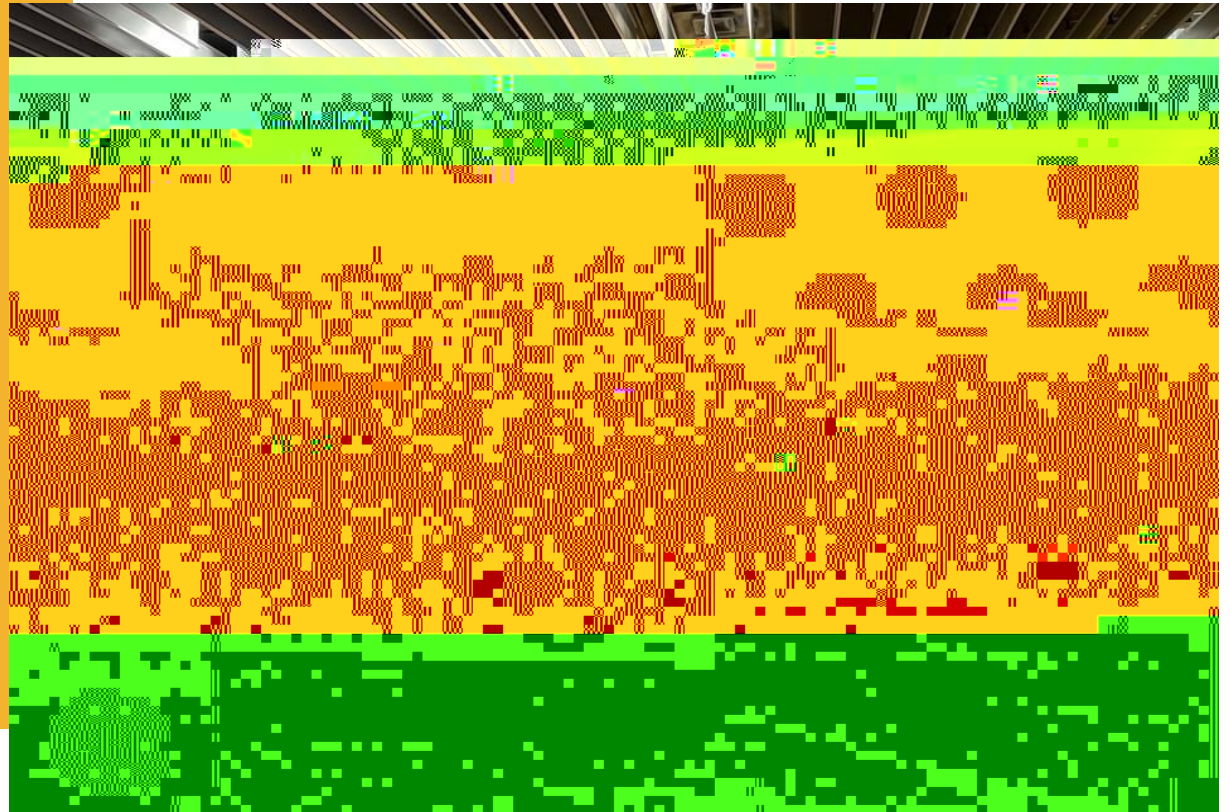
- Apply end of spring sophomore year
- Min. 3.5 overall GPA
- MCAT (min. composite 50th percentile)





Early Assurance Programs (EAPs)

- Apply end of spring sophomore year
- Min. 3.6 BCPM GPA
- MCAT (min. composite 501)
- Full scholarship for eligible LA residents



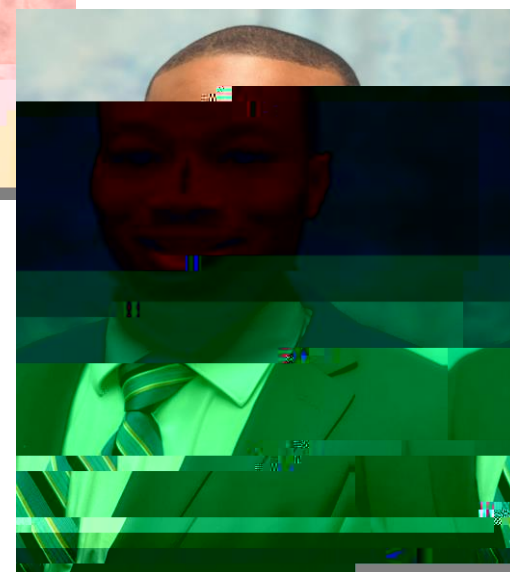
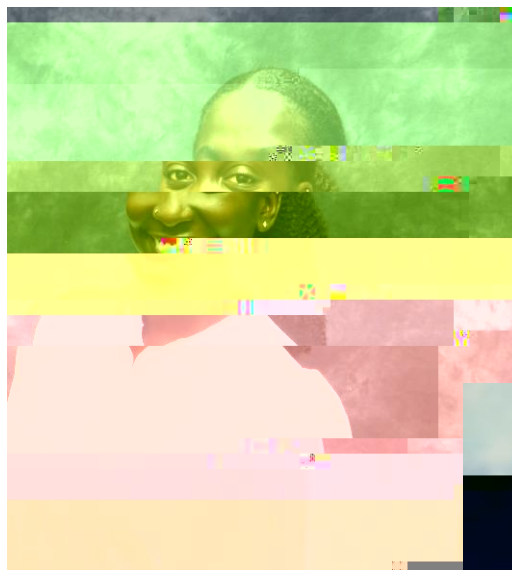


Early Assurance Programs (EAPs)

- Apply end of fall sophomore year

Early Assurance Programs (EAPs)

- Apply early spring sophomore year
- Required research program(2 summers)
- Min. 3.6 overall & BCPM GPAs
- ACT/SAT (min. composite 29/1300)
- MCAT _____





Early Assurance Programs (EAPs)

- Apply early spring sophomore year
- Required participation in UAB Dental [SHPEP](#) summer after SO year
- Min. 3.5 overall & BCP GPAs

Early Assurance Programs (EAPs)

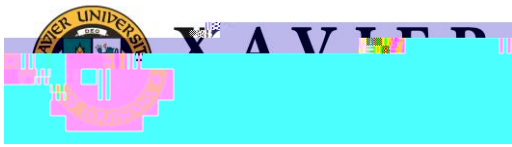
- Apply end of spring sophomore year
- Min. 3.2 overall & science GPAs
- GRE (no min.)





Early Assurance Programs (EAPs)

-
-





XU Premed Alumni Update

PREMEDICAL PROGRAM

